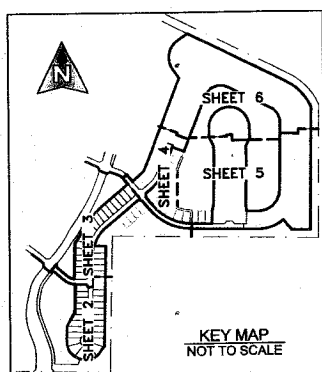
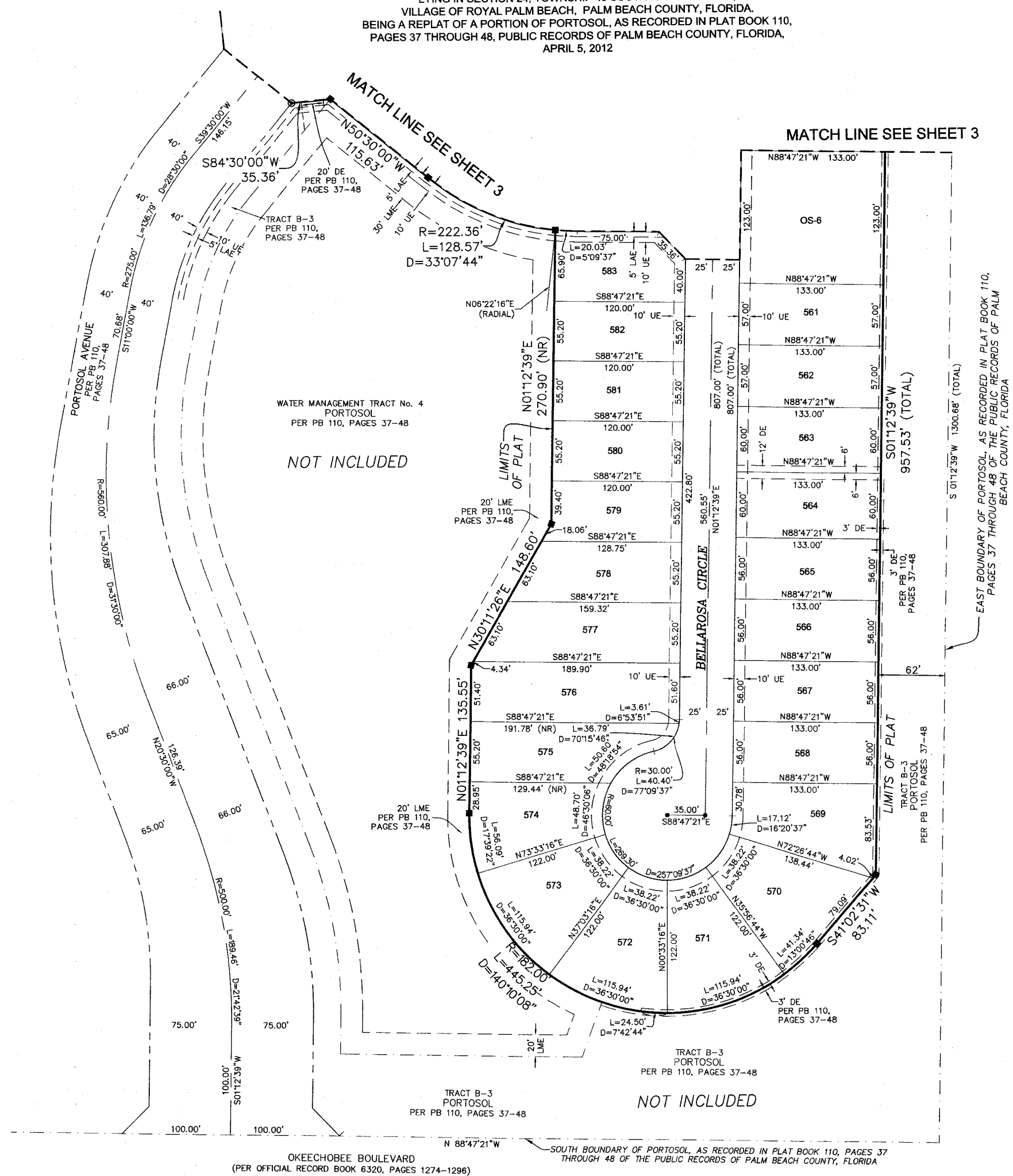


PORTOSOL REPLAT NO. 2

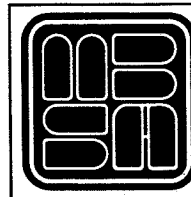
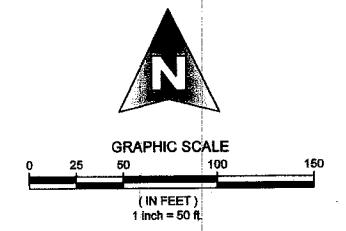
LYING IN SECTION 24, TOWNSHIP 43 SOUTH RANGE 41 EAST,
VILLAGE OF ROYAL PALM BEACH, PALM BEACH COUNTY, FLORIDA.
BEING A REPLAT OF A PORTION OF PORTOSOL, AS RECORDED IN PLAT BOOK 110,
PAGES 37 THROUGH 48, PUBLIC RECORDS OF PALM BEACH COUNTY, FLORIDA,
APRIL 5, 2012



COUNTY OF PALM BEACH)
STATE OF FLORIDA) SS
THIS PLAT WAS FILED FOR RECORD AT)
M. THIS DAY OF)
2012, AND DULY)
RECORDED IN PLAT BOOK NO.)
ON PAGE) THRU)
SHARON R. BOCK,
CLERK AND COMPTROLLER
BY: _____, D.C.



- LEGEND:**
- D= DELTA (CENTRAL ANGLE)
 - L= LENGTH
 - R= RADIUS
 - CB= CHORD BEARING
 - CD= CHORD DISTANCE
 - PSM= PROFESSIONAL SURVEYOR AND MAPPER
 - PLS= PROFESSIONAL LAND SURVEYOR
 - PRM= PERMANENT REFERENCE MONUMENT
 - PCP= PERMANENT CONTROL POINT
 - LAE= LIMITED ACCESS EASEMENT
 - LME= LAKE MAINTENANCE EASEMENT
 - MREE= MAINTENANCE ROOF AND EAVES EASEMENT
 - UE= UTILITY EASEMENT
 - DE= DRAINAGE EASEMENT
 - OS= OPEN SPACE
 - WMT= WATER MANAGEMENT TRACT
 - (R)= RADIAL
 - (NR)= NON-RADIAL
 - PB= PLAT BOOK
 - ORB= OFFICIAL RECORD BOOK
 - PG= PAGE
 - P.B.C.U.E.= PALM BEACH COUNTY UTILITY EASEMENT
 - P.K.= PARKER KALON
 - = FOUND 4"x4" CONCRETE MONUMENT WITH ALUMINUM DISK STAMPED "PRM LB 4318"
 - ⊙ = SET 4"x4" CONCRETE MONUMENT WITH ALUMINUM DISK STAMPED "SCHORAH AND ASSOCIATES PRM LB#2438"
 - = FOUND P.K. NAIL WITH DISK STAMPED "PCP LB 4318"
 - = SET P.K. NAIL WITH DISK STAMPED "PCP LB#2438"



MICHAEL B. SCHORAH & ASSOCIATES, INC.
1850 FOREST HILL BLVD., SUITE 208
WEST PALM BEACH, FLORIDA 33408
EB# 2438 TEL. (561) 968-0080 FAX. (561) 642-8726 LB# 2438

PORTOSOL REPLAT NO. 2

Z:\MINTO\PORTO SOL\1428_REPLAT_NO2.dwg, 4/27/2012 4:19:38 PM, RSM/PCP